

Figure 1:
Flow chart of search process

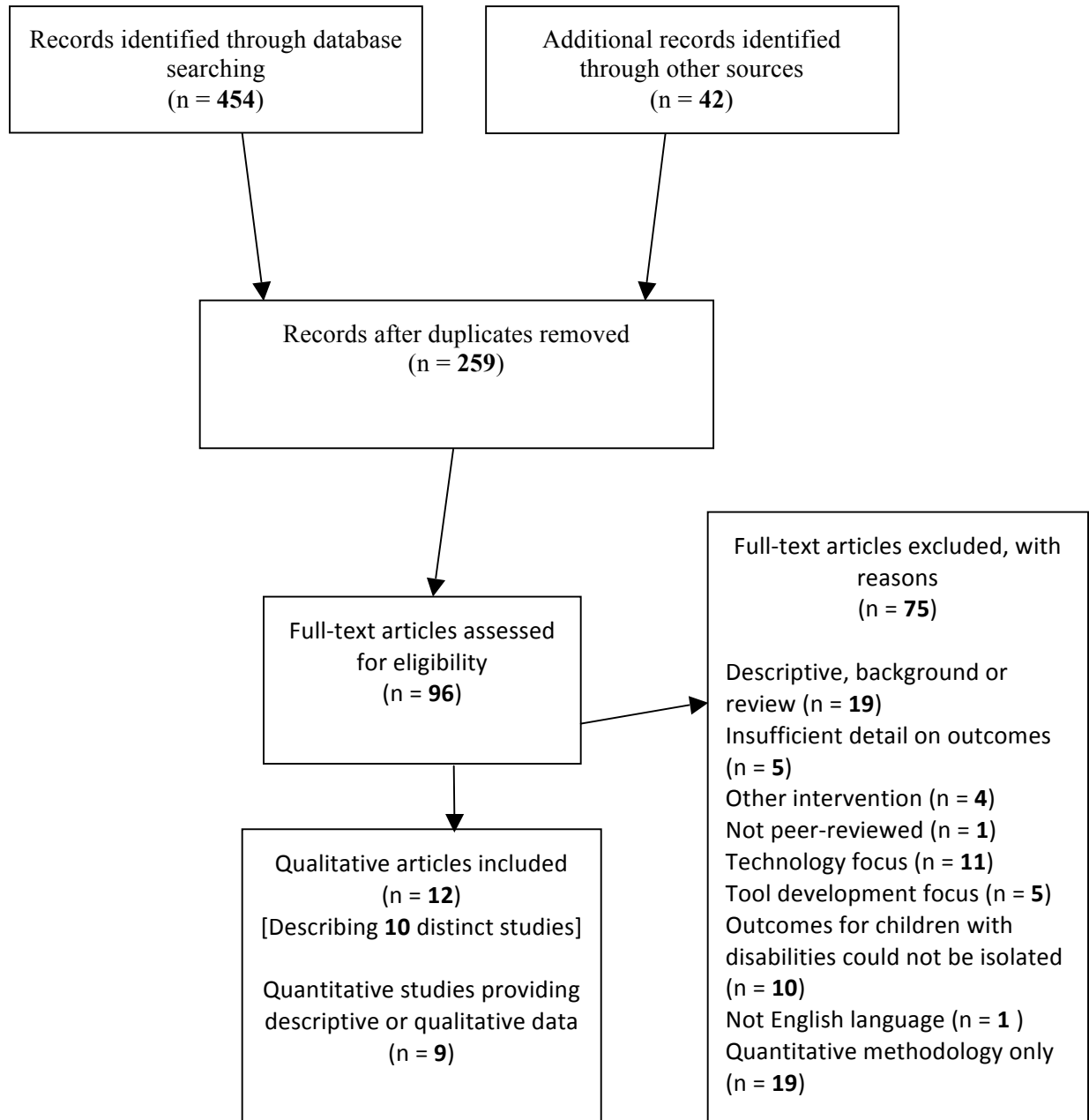


Figure 1. Flow diagram of the search results

Online Appendix A: Search strategy

Date	Database	Search terms	limits	# articles retrieved	Articles saved
23 rd February 2014	EBSCO MEDLINE and CINAHL	Power* mobility	All child	49	41
“	“	Power* mobility	All child- 0-18	58	33
“	“	Power* wheelchair	All child	34	31
“	“	Power* wheelchair	All child – 0-18	41	24
“	“	Wheelchair/power	All child	44	40
“	“	Wheelchair/power	All child – 0-18	38	30
“	EBSCO PsychInfo	Power* mobility	Childhood and adolescence	19	17
“	“	Power* wheelchair	Childhood and adolescence	19	15
“	EBSCO ERIC	Power* mobility		27	9
“	“	Power* wheelchair		19	7
“	Ovid EMBASE	Power* mobility AND child*		49	44
“	“	Power* wheelchair AND child*		46	36
“	“	Powered wheelchair/ (MESH) AND child*		15	8
“	Ovid MEDLINE	Power* mobility AND child*		31	30
	“	Power* wheelchair AND child*		25	20
“	“	Wheelchairs/ut (MESH) AND child*		11	5
“	All EBM reviews	Power* mobility		15	0
“	“	Power* wheelchair		11	3

Online Appendix B: Excluded studies with reasons

- Non primary source studies including background, descriptive or general review articles^{1–19}
- Articles where insufficient detail on power mobility outcomes for children was provided.^{20–24}
- Articles where outcomes for children with disabilities could not be isolated^{25–34}
- Articles with an equipment development focus.^{35–45}
- Articles with an outcome measurement tool focus.^{46–50}
- Articles describing outcomes from an intervention other than power mobility.^{51–54}
- Non-English language publications.⁵⁵
- Non-peer reviewed sources.⁵⁶
- Quantitative studies providing no qualitative or descriptive data specifically identified to children with disabilities.^{57–75}

References:

1. Campbell P, Milbourne S, Dugan L, Wilcox M. A review of evidence on practices for teaching young children to use assistive technology devices. *J Early Child Spec Educ.* 2006;26:3–13.
2. Hansen L. Evidence and outcomes for power mobility intervention with young children. *CASEmakers.* 2008;4(1):1–5. Available at: http://www.fippcase.org/casemakers/casemakers_vol4_no1.pdf. Accessed November 21, 2010.
3. Krey C, Calhoun C. Utilizing research in wheelchair and seating selection and configuration for children with injury/dysfunction of the spinal cord. *J Spinal Cord Med.* 2004;27:S29–S37.
4. Magnuson S. Powered mobility for young children with physical disabilities. *Phys Occup Ther Pediatr.* 1995;15(3):71–79.
5. Rosen L, Arva J, Furumasu J, et al. RESNA position on the application of power wheelchairs for pediatric users. *Assist Technol.* 2009;21:218–25
6. Breed A, Ibler I. The motorized wheelchair: New freedom, new responsibility and new problems. *Dev Med Child Neurol.* 1982;24:366–71.
7. Butler C. High tech tots: Technology for mobility, manipulation, communication, and learning in early childhood. *Infants Young Child.* 1988;1:66–73.
8. Butler C. Augmentative mobility: why do it. *Phys Med Rehabil Clin N Am.* 1991;2(4):801–15.

9. Cowan D, Turner-Smith A. The user's perspective on the provision of electronic assistive technology: Equipped for life? *Br J Occup Ther*. 1999;62:2–6.
10. Johnson KL, Dudgeon B, Kuehn C, Walker W. Assistive technology use among adolescents and young adults with spina bifida. *Am J Public Health*. 2007;97:330–6.
11. Jones M. Mobility aids for younger children...provision of powered mobility equipment to young children. *Int J Ther Rehabil*. 2004;11:132.
12. Van Sant AF. Children--start your motors! *Pediatr Phys Ther*. 2012;24:129.
13. Rosenbaum P. Effects of powered mobility on self-initiated behaviours of very young children with locomotor disability (1986). *Dev Med Child Neurol*. 2008;50:644.
14. Lin W, Pierce A, Skalsky AJ, McDonald CM. Mobility-assistive technology in progressive neuromuscular disease. *Phys Med Rehabil Clin N Am*. 2012;23:885–94.
15. Nicolson A, Moir L, Millsteed J. Impact of assistive technology on family caregivers of children with physical disabilities : a systematic review. *Disabil Rehabil Assist Technol*. 2012;7:350–5.
16. Henderson S, Skelton H, Rosenbaum P. Assistive devices for children with functional impairments: impact on child and caregiver function. *Dev Med Child Neurol*. 2008;50:89–98.
17. Rousseau-Harrison K, Rochette A. Impacts of wheelchair acquisition on children from a person-occupation-environment interactional perspective. *Disabil Rehabil Assist Technol*. 2013;8:1–10.
18. Palisano RJ, Tieman BL, Walter SD, et al. Effect of environmental setting on mobility methods of children with cerebral palsy. *Dev Med Child Neurol*. 2003;45(2):113–20.
19. Wiart L, Darrah J. Changing philosophical perspectives on the management of children with physical disabilities--their effect on the use of powered mobility. *Disabil Rehabil*. 2002;24:492–8.
20. Nilsson L, Nyberg P. Single-switch control versus powered wheelchair for training cause-effect relationships: case studies. *Technol Disabil*. 1999;11:35–38.
21. Kling A, Otr L, Campbell PH, Wilcox J. Young Children With Physical Disabilities. *Infants Young Child*. 2010;23:169–83.

22. Huang I-C, Sugden D, Beveridge S. Assistive devices and cerebral palsy: factors influencing the use of assistive devices at home by children with cerebral palsy. *Child Care Health Dev.* 2009;35:130–9.
23. Huang I-C, Sugden D, Beveridge S. Assistive devices and cerebral palsy: the use of assistive devices at school by children with cerebral palsy. *Child Care Health Dev.* 2009;35:698–708.
24. Richardson M, Frank A. Electric powered wheelchairs for those with muscular dystrophy: Problems of posture, pain and deformity. *Disabil Rehabil Assist Technol.* 2009;4:181–8.
25. Deitz J, Jaffe K, Wolf L, Massagli T, Anson D. Pediatric power wheelchairs: Evaluation of function in the home and school environments. *Assist Technol.* 1991;3:24–31.
26. Frank AO, Ward J, Orwell NJ, McCullagh C, Belcher M. Introduction of a new NHS electric-powered indoor/outdoor chair (EPIOC) service: benefits, risks and implications for prescribers. *Clin Rehabil.* 2000;14:665–73.
27. Cooper R, Ferretti E, Oyster M, Kelleher A, Cooper R. The relationship between wheelchair mobility patterns and community participation among individuals with Spinal Cord Injury. *Assist Technol.* 2011;23(3):177–83.
28. Davies A, Souza LH De, Frank AO. Changes in the quality of life in severely disabled people following provision of powered indoor/outdoor chairs. *Disabil Rehabil.* 2003;25:286–90.
29. Hays R, Jaffe K, Ingman E. Accidental death associated with motorized wheelchair use: a case report. *Arch Phys Med Rehabil.* 1985;66:709.
30. Wessel R, Wentz J, Markle L. Power soccer: experiences of students using power wheelchairs in a collegiate athletic club. *J Postsecond Educ.* 2011;24:147–159..
31. Nilsson L, Eklund M. Driving to learn: Powered wheelchair training for those with cognitive disabilities. *Int J Ther Rehabil.* 2006;13:517–27.
32. Nilsson L, Eklund M, Nyberg P, Thulesius H. Driving to learn in a powered wheelchair: The process of learning joystick use in people with profound cognitive disabilities. *Am J Occup Ther.* 2011;65(6):652–60.
33. Palisano R, Shimmell LJ, Stewart D, Lawless J, Rosenbaum P, Russell D. Mobility experiences of adolescents with cerebral palsy. *Phys Occup Ther Pediatr.* 2009;29:133–53.

34. Frank AO, Souza LH De. Recipients of electric-powered indoor / outdoor wheelchairs provided by a national health service : A cross-sectional study. *Arch Phys Med Rehabil*. 2013;94:2403–9.
35. Chen X, Ragonesi C, Galloway J, Agrawal S. Training toddlers seated on mobile robots to drive indoors amidst obstacles. *IEEE Trans Neural Syst Rehabil Eng*. 2011;19:271–9.
36. Flodin E. Interactive design – the desire for autonomous upright mobility: A longitudinal case study. *Technol Disabil*. 2007;19:213–24.
37. Chiulli C, Corradi-Scalise D, Donatelli-Schultheiss L. Powered mobility vehicles as aids in independent locomotion for young children. Suggestion from the field. *Phys Ther*. 1988;68:997–9.
38. Montesano L, Díaz M, Bhaskar S, Minguez J. Towards an intelligent wheelchair system for users with cerebral palsy. *IEEE Trans Neural Syst Rehabil Eng*. 2010;18:193–202.
39. Marchal-Crespo L, Furumasu J, Reinkensmeyer DJ. A robotic wheelchair trainer: design overview and a feasibility study. *J Neuroeng Rehabil*. 2010;7:40.
40. Huang H-H, Galloway JC. Modified ride-on toy cars for early power mobility. *Pediatr Phys Ther*. 2012;24:149–54.
41. Zeng Q, Burdet E, Teo CL. Evaluation of a collaborative wheelchair system in cerebral palsy and traumatic brain injury users. *Neurorehabil Neural Repair*. 2009;23:494–504.
42. Schoepflin ZR, Chen X, Ragonesi CB, Galloway JC, Agrawal SK. Design of a novel mobility device controlled by the feet motion of a standing child: a feasibility study. *Med Biol Eng Comput*. 2011;49:1225–31.
43. Koczur L, Strine C, Peischl D. Case presentations: practical applications in wheelchair technology. *Phys Med Rehabil*. 2000;14:323–38.
44. Laffont I, Guillon B, Fermanian C, et al. Evaluation of a stair-climbing power wheelchair in 25 people with tetraplegia. *Arch Phys Med Rehabil*. 2008;89:1958–64.
45. None. Powered mobility aids for children. *Eng Med*. 1978;7(4):253.
46. Furumasu J, Guerette P, Tefft D. The development of a powered wheelchair mobility program for young children. *Technol Disabil*. 1996;5:41–8.

47. Furumasu J, Guerette P, Tefft D. Relevance of the Pediatric Powered Wheelchair Screening Test for children with cerebral palsy. *Dev Med Child Neurol*. 2004;46:468–74.
48. Nilsson L, Nyberg P, Eklund M. Training characteristics important for growing consciousness of joystick-use in people with profound cognitive disabilities. *Int J Ther Rehabil*. 2010;17:588–95.
49. Nilsson L, Eklund M, Nyberg P. Driving to Learn in a powered wheelchair: Inter-rater reliability of a tool for assessment of joystick-use. *Aust Occup Ther J*. 2011;58:447–54.
50. Tefft D, Guerette P, Furumasu J. Cognitive predictors of young children's readiness for powered mobility. *Dev Med Child Neurol*. 1999;41:665–70.
51. Curtin M, Clarke G. Listening to young people with physical disabilities' experiences of education. *Int J Disabil Dev Educ*. 2005;52:195–214.
52. Duval E; Terp K. The relationship between aquatic therapy, ambulation abilities, and power wheelchair utilization in males with Duchenne's muscular dystrophy. *J Aquat Phys Ther*. 2008;16:16.
53. Engel JM, Kartin D, Carter GT, Jensen MP, Jaffe KM. Pain in youths with neuromuscular disease. *Am J Hosp Palliat Care*. 2012;26:405–12.
54. Wojtczak K. This worked for me. *RE:view*. 1991;23:35–42.
55. Furuya Y. Effects of behavioral learning on the ability to operate a wheelchair. *Japanese J Spec Educ*. 1994;31:83–7.
56. Frank A; De Souza L; Evans S; Neophytou C; Comparison of young and old individuals' use of electric-powered indoor/outdoor wheelchairs (EPIOCs). *Clin Rehabil*. 2008;22:86–94.
57. Barfield JP, Malone L, Collins JM, Ruble SB. Disability type influences heart rate response during power wheelchair sport. *Med Sci Sport Exerc*. 2005;37(5):718–23.
58. Butler C. Effects of powered mobility on self-initiated behaviors of very young children with locomotor disability. *Dev Med Child Neurol*. 1986;28:325–32.
59. Butler C, Okamoto G, McKay T. Powered mobility for very young disabled children. *Dev Med Child Neurol*. 1983;25:472–4.
60. Butler C, Okamoto G, McKay T. Motorized wheelchair driving by disabled children. *Arch Phys Med Rehabil*. 1984;65:95–7.

61. Cooper R, Tolerico M, Kaminski B, Spaeth D, Ding D, Cooper R. Quantifying wheelchair activity of children: a pilot study. *Am J Phys Med Rehabil*. 2008;87(12):977–83. doi:10.1097/PHM.0b013e31818dfe74.
62. Deitz J, Swinth Y, White O. Powered mobility and preschoolers with complex developmental delays. *Am J Occup Ther*. 2002;56(1):86–96.
63. Dunaway S, Montes J, O’Hagen J, Sproule DM, Vivo DC De, Kaufmann P. Independent mobility after early introduction of a power wheelchair in spinal muscular atrophy. *J Child Neurol*. 2013;28(5):576–82. doi:10.1177/0883073812449383.
64. Galloway J, Ryu J-C, Agrawal S. Babies driving robots: Self-generated mobility in very young infants. *Intell Serv Robot*. 2008;1(2):123–134. doi:10.1007/s11370-007-0011-2.
65. Huhn K, Guarrera-Bowlby P, Deutsch J. The clinical decision-making process of prescribing power mobility for a child with cerebral palsy. *Pediatr Phys Ther*. 2007;19(3):254–60. doi:10.1097/PEP.0b013e31812c65cc.
66. Jones M, McEwen I, Neas B. Effects of power wheelchairs on the development and function of young children with severe motor impairments. *Pediatr Phys Ther*. 2012;24(2):131–140. doi:10.1097/PEP.0b013e31824c5fdc.
67. Lepage C, Noreau L, Bernard P. Association between characteristics of locomotion and accomplishment of life habits in children with cerebral palsy. *Phys Ther*. 1998;78(5):458–69. Available at: <http://www.ncbi.nlm.nih.gov/pubmed/9597060>.
68. Lynch A, Ryu J-C, Agrawal S, Galloway J. Power mobility training for a 7-month-old infant with spina bifida. *Pediatr Phys Ther*. 2009;21(4):362–8. doi:10.1097/PEP.0b013e3181bfae4c.
69. Ostensjø S, Carlberg Eb, Vøllestad N. The use and impact of assistive devices and other environmental modifications on everyday activities and care in young children with cerebral palsy. *Disabil Rehabil*. 2005;27(14):849–61. Available at: <http://www.ncbi.nlm.nih.gov/pubmed/16096237>. Accessed October 1, 2010.
70. Pope P, Bowes C, Booth E. Postural control in sitting the SAM system: Evaluation of use over three years. *Dev Med Child Neurol*. 1994;36(3):241–252. Available at: <http://www3.interscience.wiley.com/journal/121513078/abstract>. Accessed December 5, 2010.
71. Ragonesi C, Chen X, Agrawal S, Galloway J. Power mobility and socialization in preschool: a case study of a child with cerebral palsy. *Pediatr Phys Ther*. 2010;22(3):322–9. doi:10.1097/PEP.0b013e3181eab240.

72. Ragonesi C, Chen X, Agrawal S, Galloway J. Power mobility and socialization in preschool : Follow-up case study of a child with cerebral palsy. *Pediatr Phys Ther.* 2011;23(4):399–406. doi:10.1097/PEP.0b013e318235266a.
73. Ragonesi C, Galloway J. Short-term, early intensive power mobility training. *Pediatr Phys Ther.* 2012;24(2):141–148. doi:10.1097/PEP.0b013e31824c764b.
74. Guerette P, Furumasu J, Tefft D. The positive effects of early powered mobility on children’s psychosocial and play skills. *Assist Technol.* 2013;25(1):39–48. doi:10.1080/10400435.2012.685824.
75. Tefft D, Guerette P, Furumasu J. The impact of early powered mobility on parental stress, negative emotions, and family social interactions. *Phys Occup Ther Pediatr.* 2011;31(1):4–15. doi:10.3109/01942638.2010.529005.